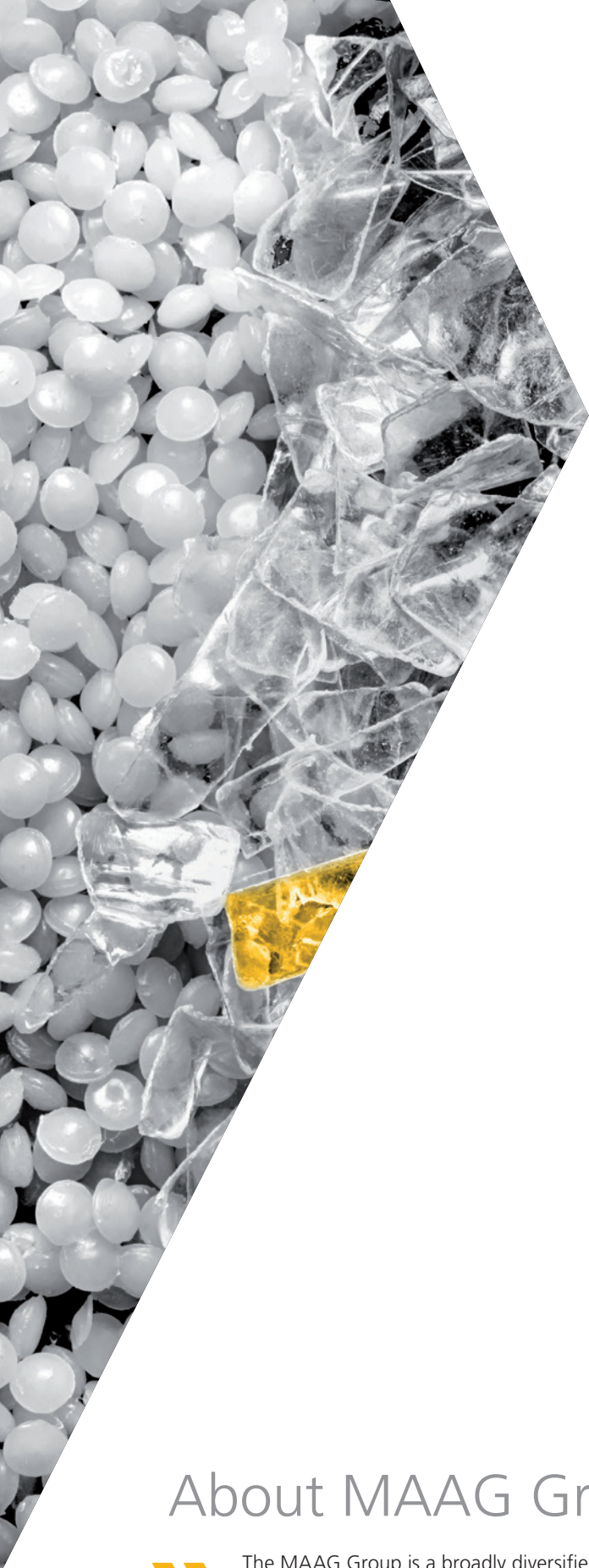


RECYCLING SYSTEMS >

ETTLINGER

## 고성능 멜트 필터

## High Performance Melt Filters



# Patented polymer filtration

As a specialist for polymer filtration and recycling systems, ETTLINGER develops custom melt-filtration systems for the international market.

Our core competency is in the development and manufacture of high-performance continuous melt filters and injection molding machines.

On the melt filtration side, we provide systems for continuous filtration of feedstock with varying degrees of contamination. Our patented systems remove contaminants such as paper, aluminum, wood, silicones or high-melting polymer composites from all standard polymer materials.

When it comes to injection molding machines, our technology is ideal for the manufacturing of thick-walled polymer moldings weighing more than 120 kg. The name ETTLINGER has a global reputation for innovation, efficiency, versatility and customer support. Thanks to our seamless modular system, we can offer affordable solutions and flexible machine concepts for a wide range of applications.

Expertise, products and technologies within the MAAG Group are bundled, enabling ETTLINGER customers to profit from an even broader and more effective portfolio. Vertically integrated products and services as well as access to the MAAG Group's worldwide after-sales and support create real added value.

폴리머 여과 및 재활용 시스템의 전문기업 ETTLINGER는 글로벌시장을 위한 맞춤형 응용 여과 시스템을 개발합니다.

ETTLINGER 필터는 다양한 종류의 오염물질을 지속적이며 특허된 시스템으로 제거합니다.

\*종이, 알루미늄, 나무, 실리콘, 고온폴리머

## About MAAG Group:

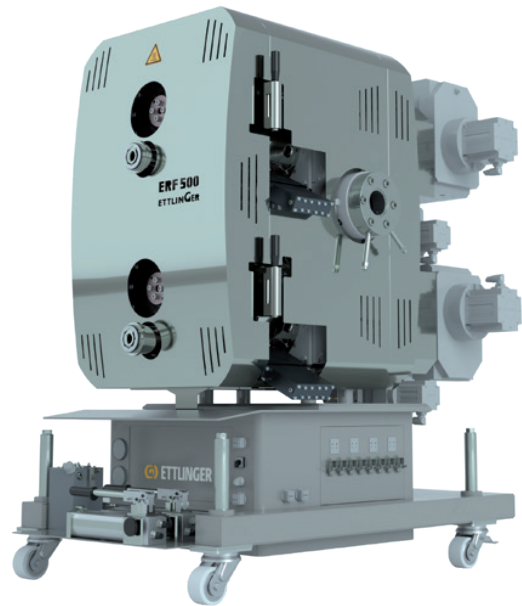


The MAAG Group is a broadly diversified global solutions provider with integrated and customizable systems in process technology for the polymer, chemical, petrochemical, pharmaceutical and food industries. Its Pump & Filtration Systems, Pelletizing & Pulverizing Systems, Recycling Systems and Digitalization divisions consolidate the many years of experience and in-depth know-how of the AMN, AUTOMATIK, ETTLINGER, GALA, MAAG, REDUCTION, SCHEER and XANTEC product brands. The MAAG Group currently employs over 1,100 people at production sites in Switzerland, Germany, Italy, the USA, and China. Additional sales and service centers in France, Malaysia, India, Thailand and Brazil ensure close attention to customers' needs. For more information visit [www.maag.com](http://www.maag.com). The MAAG Group is a business unit of Pumps & Process Solutions, a segment of the Dover Corporation.



# Quality since 1983

- 1983 Roderich Ettliger, a mechanical engineer by trade, founds the company as a manufacturer of plastic injection molding and customized machines.
- 1999 A new production shop opens to respond to the increased demand for ETTLINGER products.
- 2004 The first "ERF 200", ETTLINGER's patented melt filter system, enters the market with immediate success.
- 2010 After 27 years steering the company's success, Roderich Ettliger makes way for his son Thorsten and Volker Neuber, who have since been responsible respectively for the technical and commercial development.
- 2013 ETTLINGER North America is established in Atlanta to serve customers in the U.S. and Canada with an efficient sales network, local technical services and rapidly available spare parts.
- 2014 The new ECO high performance melt filter for PET and the ERF 500 for throughputs up to 6,000 kg/h are launched in the market.
- 2015 ETTLINGER's offices and production facility in Königsbrunn are extended and modernized as demand continues to rise.
- 2017 ETTLINGER presents the new ERF 350 melt filter as a further development of the proven ERF 250 technology.
- 2018 ETTLINGER joins MAAG Group, which is represented in the markets with its product brands AUTOMATIK, GALA, MAAG, REDUCTION and SCHEER.
- 2019 At the K 2019 trade fair in Dusseldorf, ETTLINGER unveils the brand new ERF 1000 high performance melt filter for throughputs of up to 10,000 kg/h.
- 2020 Uwe Kellner becomes new Managing Director. ETTLINGER becomes center of excellence for recycling systems within MAAG Group.
- 2022 The high-performance model ECO 1000 is added to our successful ECO product range. Staying one step ahead of market trends, this filter is capable of high throughputs up to 10,000 kg/hour for low-viscosity plastics



MAAG의 제품 포트폴리오를 통해 재활용 시스템과 같은 고객별 응용 분야에 최적의 솔루션을 구성할 수 있습니다.

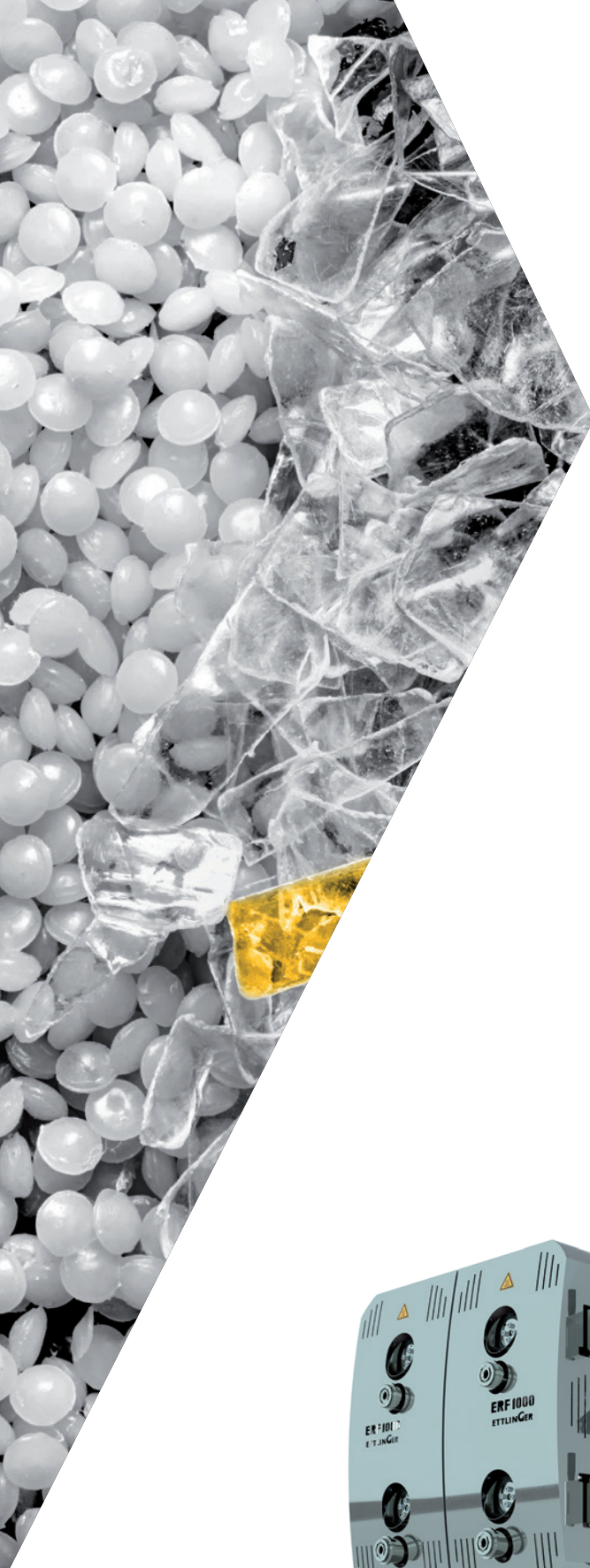
- 최고 품질의 재활용
- 최고의 상품성
- 최상의 에너지 효율



MAAG's product portfolio enables optimum solutions to be configured for customer-specific applications such as recycling systems. Our downstream recycling equipment provides:

- Top-quality recyclates
- Maximum productivity
- Optimum energy efficiency





연속적으로 작동하는 당사의 고성능 용융 필터는 전 세계적으로 다양한 형태의 오염물이 있는 폴리머 원료를 여과하는 데 성공적으로 사용되고 있습니다.

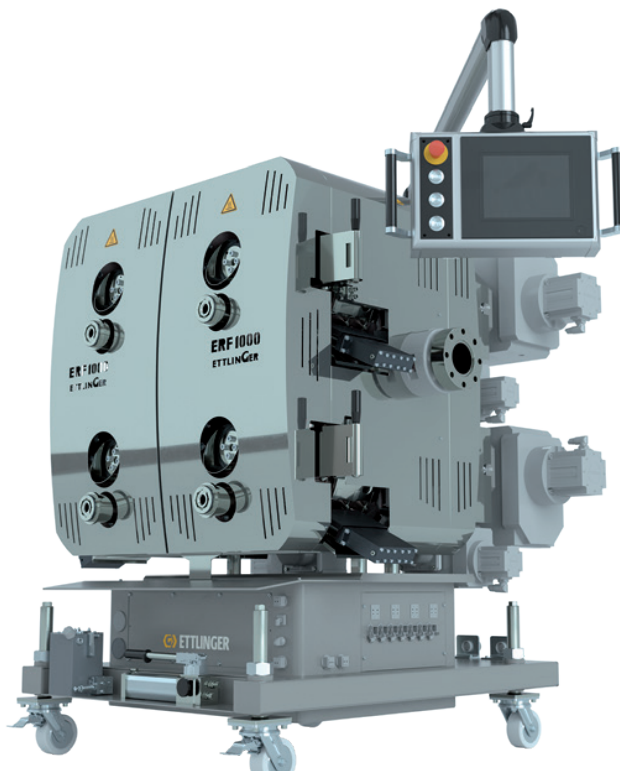
## High performance melt filters

Our continuously operating, high performance melt filters are used successfully around the world to filter polymer feedstock with varying degrees of contamination.

ETTLINGER melt filters are the perfect technology for processing a variety of recycled materials – with a patented principle that has already demonstrated its functionality and performance in many industrial applications throughout the globe. The ERF and ECO series are capable of processing virtually any standard polymer that occurs in recycling plants, sheet and film manufacturing, tape and fiber production, or the compounding industry.

Owing to their uniquely compact design, they are also ideal for retrofitting existing extrusion lines.

ETTLINGER 용융 필터는 다양한 재활용 재료를 처리하기 위한 완벽한 기술입니다.



## How they work

All ETTLINGER high performance melt filters are based on the same principle:

Melt flows from the outside to the inside of a continuously rotating filter drum with a large number of conical holes. The contaminants contained in the melt are retained on the outside filter surface; they are immediately removed from the screen by a scraper and then fed to the discharge system.

The filter drum and discharge system speeds can be adjusted independently of one another, so that in spite of the many possible applications the optimum setting can always be selected from both a processing and an economic perspective.

All ETTLINGER filters are offered with several possible mesh sizes:

Micron	Mesh
60	240
80	190
120	120
150	100
200	70
250	60
300	50
400	40
500	35
750	22
1000	18

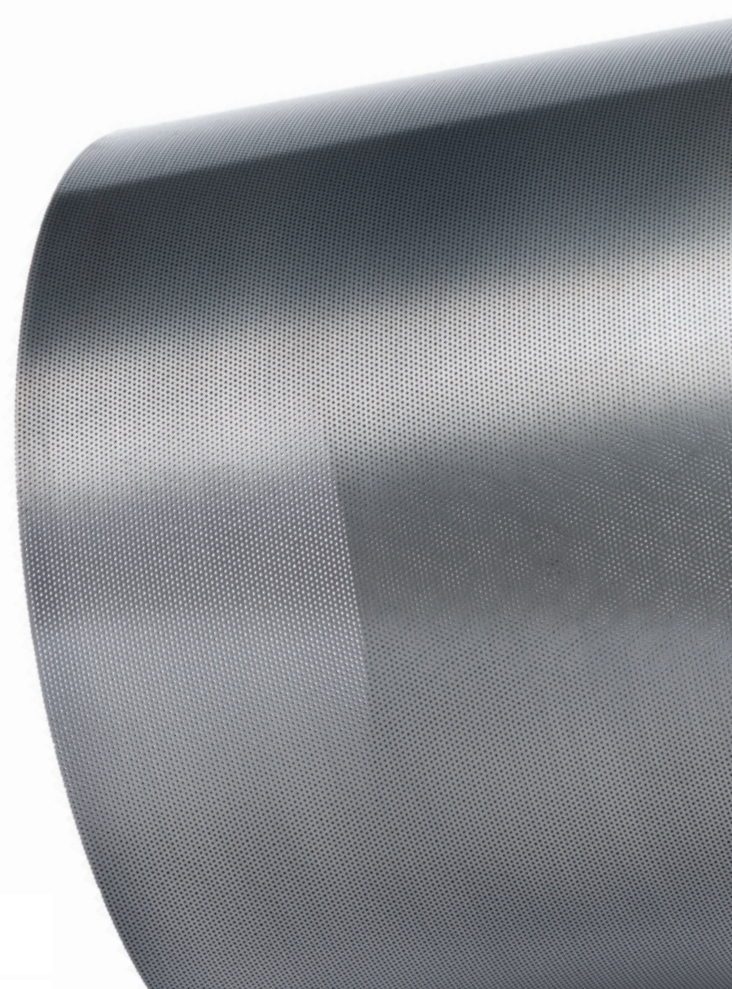
미크론

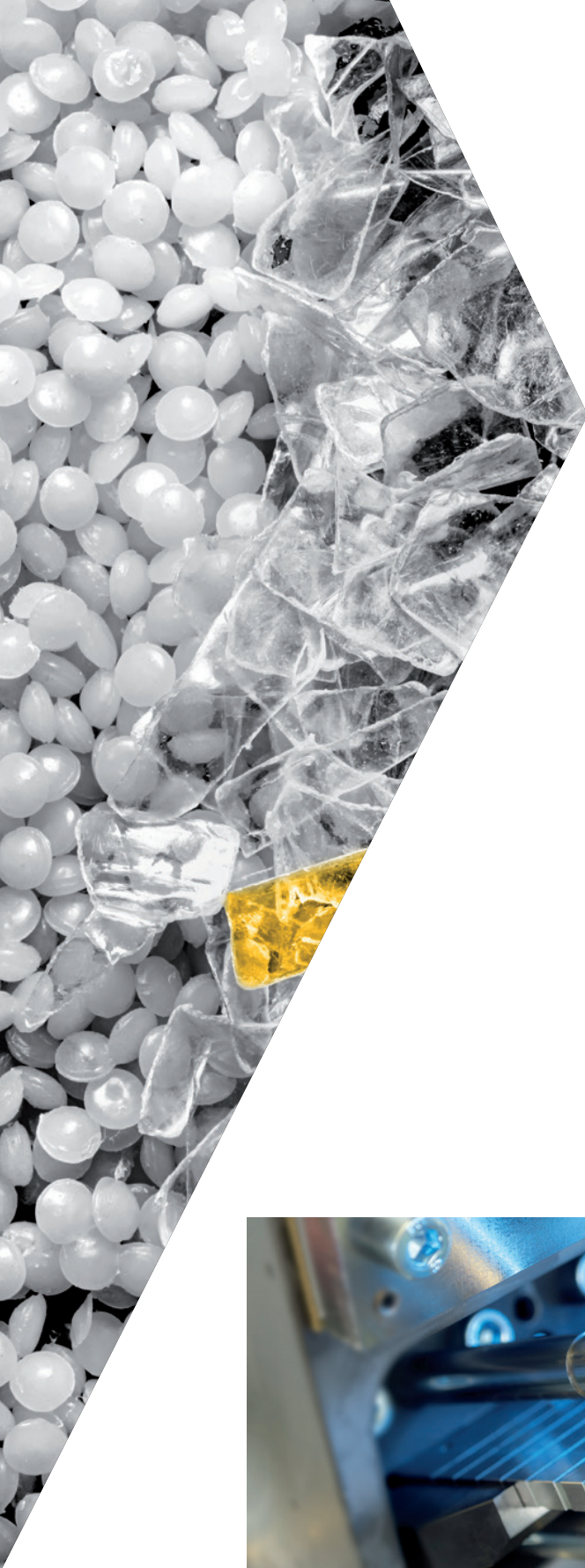
메쉬

중량 기준으로 최대 16%의 오염 물질까지 가능합니다.

### Benefits for you:

- Suitable for materials with up to 16 % by weight contamination
- Extremely efficient filtration – including aluminum and elastomers
- Constant process pressure
- Short material and contaminant residence times in the melt filter
- Closed system, no contact with outside air
- Can run automatically for several weeks or months without changing the filter, depending on the application
- Very low melt losses even with high contamination
- Compact design with a small footprint
- Automatic operation with high operational safety





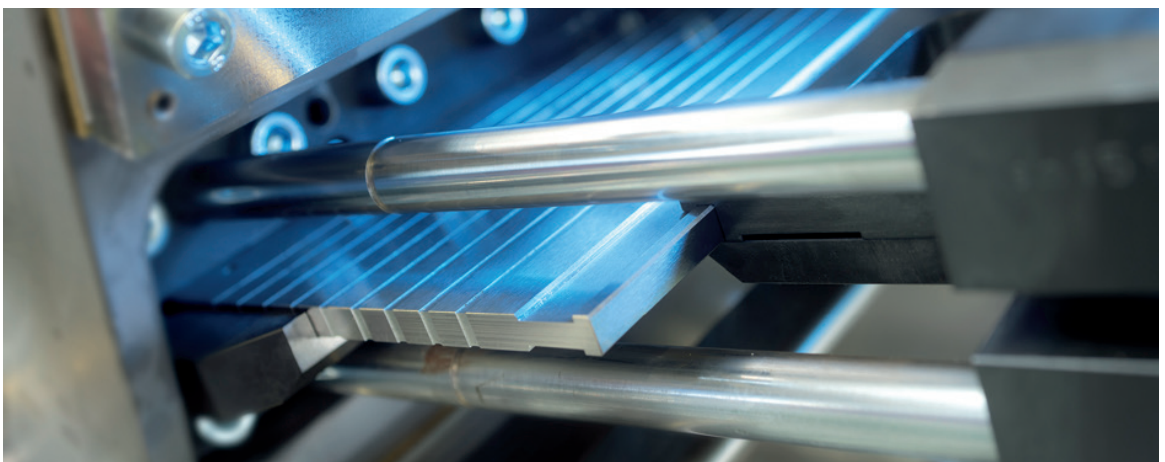
ERF 시리즈의 연속 용융 필터는 최대 중량 16%의 오염 물질까지 적합하며 필터를 교체하지 않고도 장기간 사용할 수 있습니다.

## ERF series

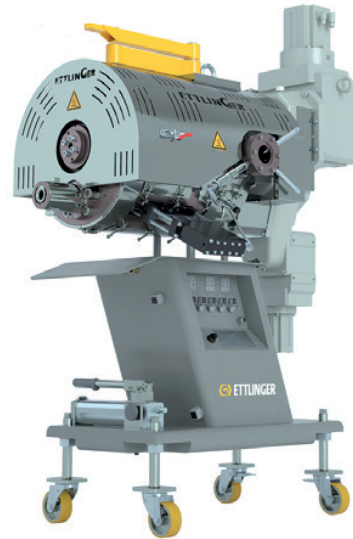
The continuous melt filters in the ERF series are suitable for materials with up to 16 % by weight contamination and are guaranteed to remain in use for long periods without changing the filter.

Our ERF melt filters are capable of processing a wide range of polymers (e.g. LDPE, LLDPE, HDPE, PP, PS, ABS, PC / ABS, TPE, TPU, POM). All solid or elastomer foreign particles such as paper, wood, aluminum, copper, rubber, silicone, or high-melting polymer composites are efficiently removed.

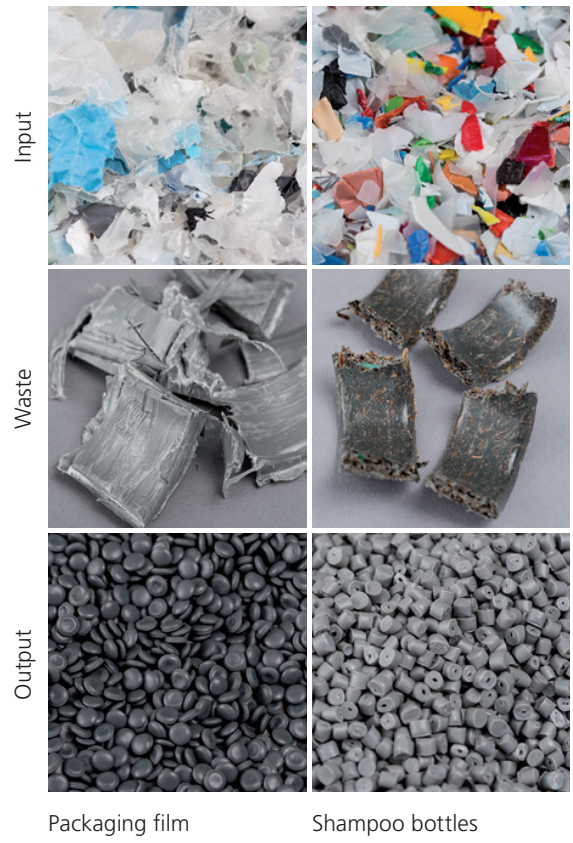
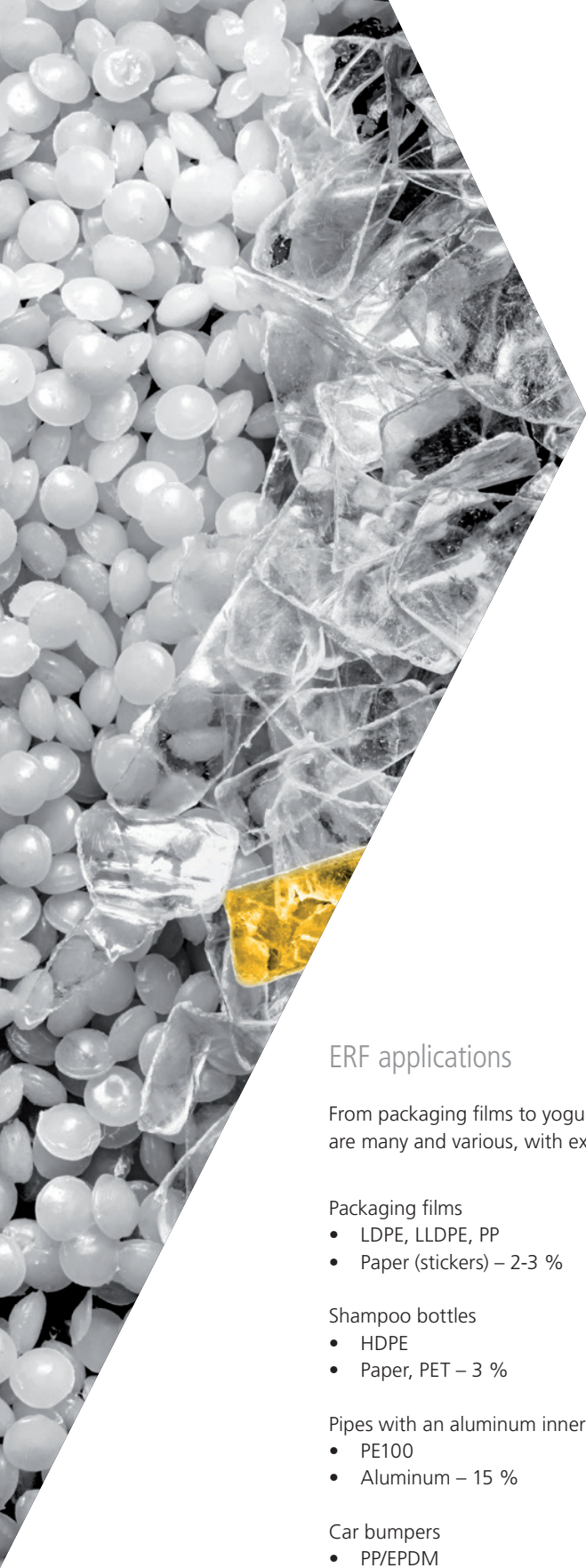
The classic application for ERF melt filters is repelletizing lines, but they are also successfully employed for sheet and profile extrusion. ERF melt filters can in principle be used in any extrusion line – either single or twin-screw and irrespective of the type of pelletizing system or other downstream unit. Four different sizes enable throughputs from 150 to 10,000 kg/h depending on the application.



- 일정한 공정 압력
- 용융 필터에서의 최소 오염 물질 체류 시간
- 외부 공기와 접촉하지 않는 폐쇄형 시스템
- 필터를 변경하지 않고 몇 주 또는 몇 달 동안 자동으로 작업 가능
- 오염도가 높은 경우에도 원료 손실이 매우 적음
- 설치 공간이 작은 콤팩트한 디자인
- 작업 안전성이 높은 자동 운전



	ERF 200	ERF 350	ERF 500	ERF 1000
Total filtration surface [cm <sup>2</sup> ]	1,250	1,570	3,140	6,280
Throughput max. [kg/h]	1,100	3,800	6,000	10,000
Heating zones	5 + 1	5 + 1	13 + 2	16 + 3
Operating pressure max. [bar]	300	300	300	300
Length x width x height [cm]	58 x 132 x 179	64 x 135 x 169	89 x 148 x 172	145 x 165 x 200
Weight [kg]	800	1,000	3,300	5,500
Total installed capacity [kW]	24	27	67	105



포장필름에서 요거트 포트에 이르기까지 ERF 용융 필터의 응용 분야는 다양하며 항상 우수한 결과를 제공합니다.

### ERF applications

From packaging films to yogurt pots – the applications for ERF melt filters are many and various, with excellent results every time.

#### Packaging films

- LDPE, LLDPE, PP
- Paper (stickers) – 2-3 %

#### Shampoo bottles

- HDPE
- Paper, PET – 3 %

#### Pipes with an aluminum inner layer

- PE100
- Aluminum – 15 %

#### Car bumpers

- PP/EPDM
- Paint – up to 3 %

#### Electronic waste

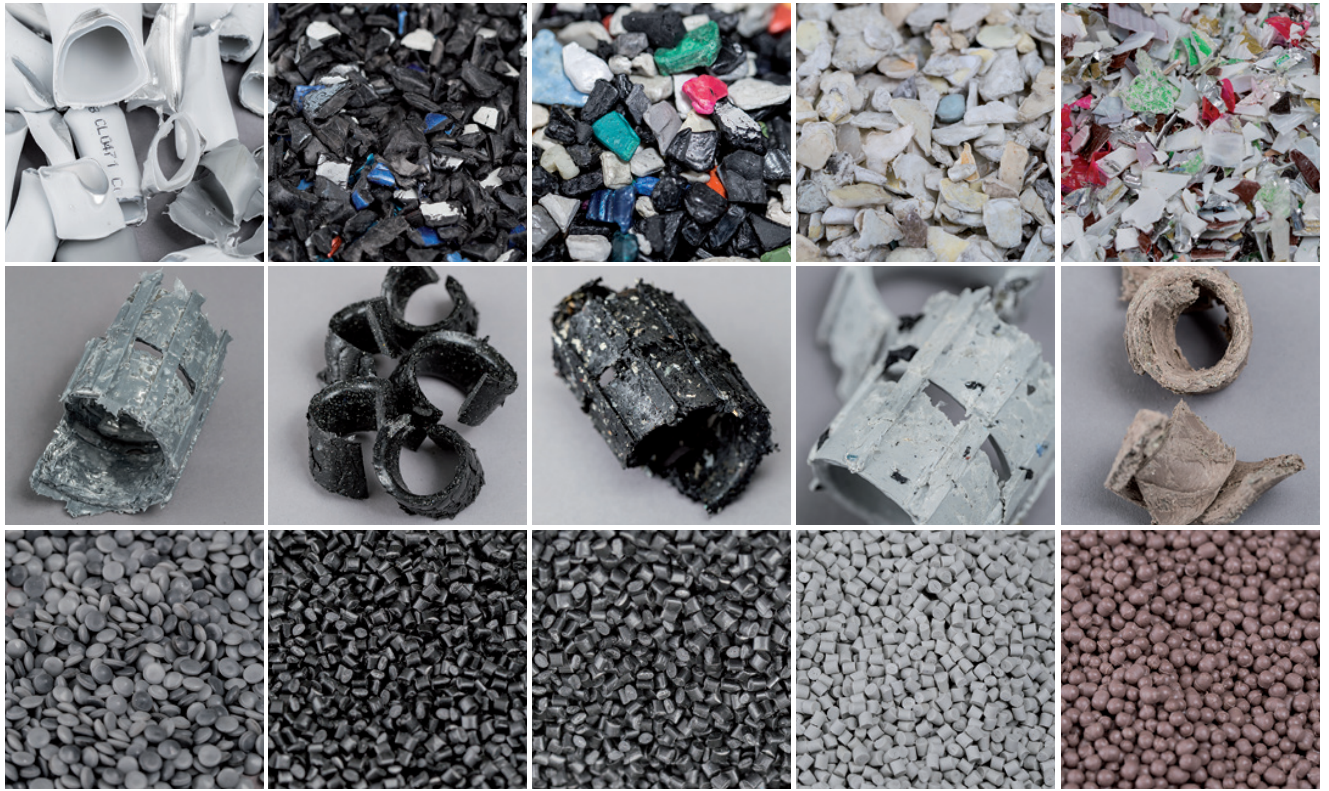
- ABS
- Paper, aluminum, rubber – up to 4 % overall

#### Refrigerator recycling

- PS
- Paper, wood, rubber (seals) – up to 4 % overall

#### Yogurt pots

- PS
- Aluminum or PET – up to 4 %



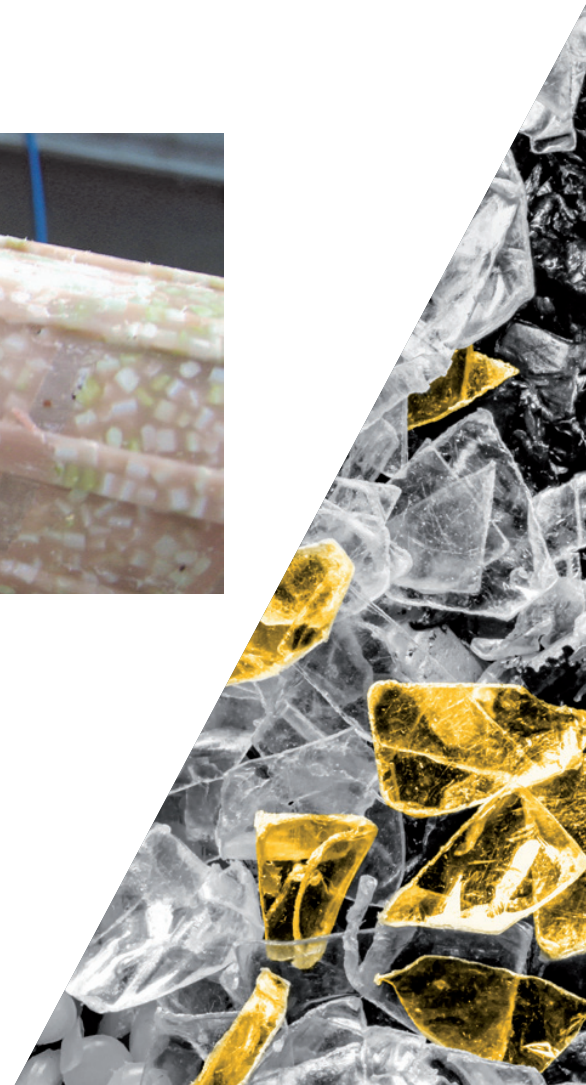
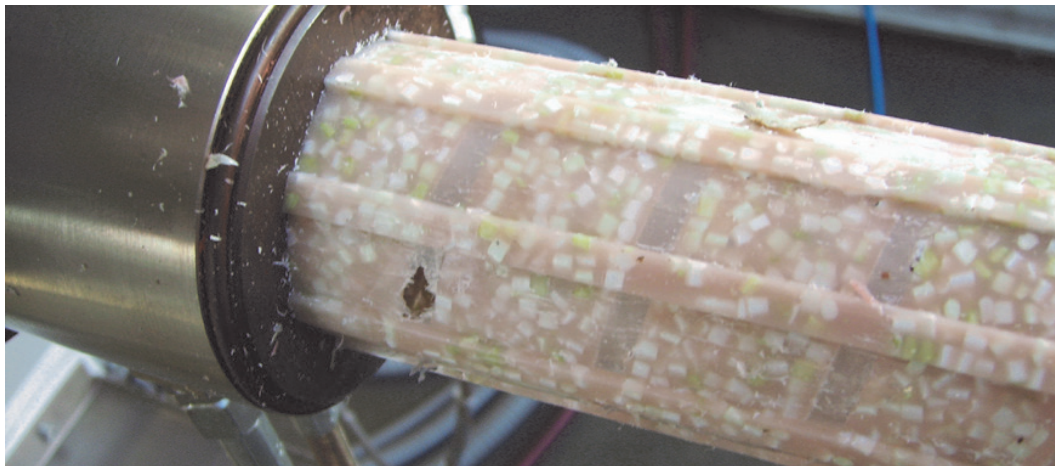
Pipes with aluminum  
파이프(알루미늄 혼합)

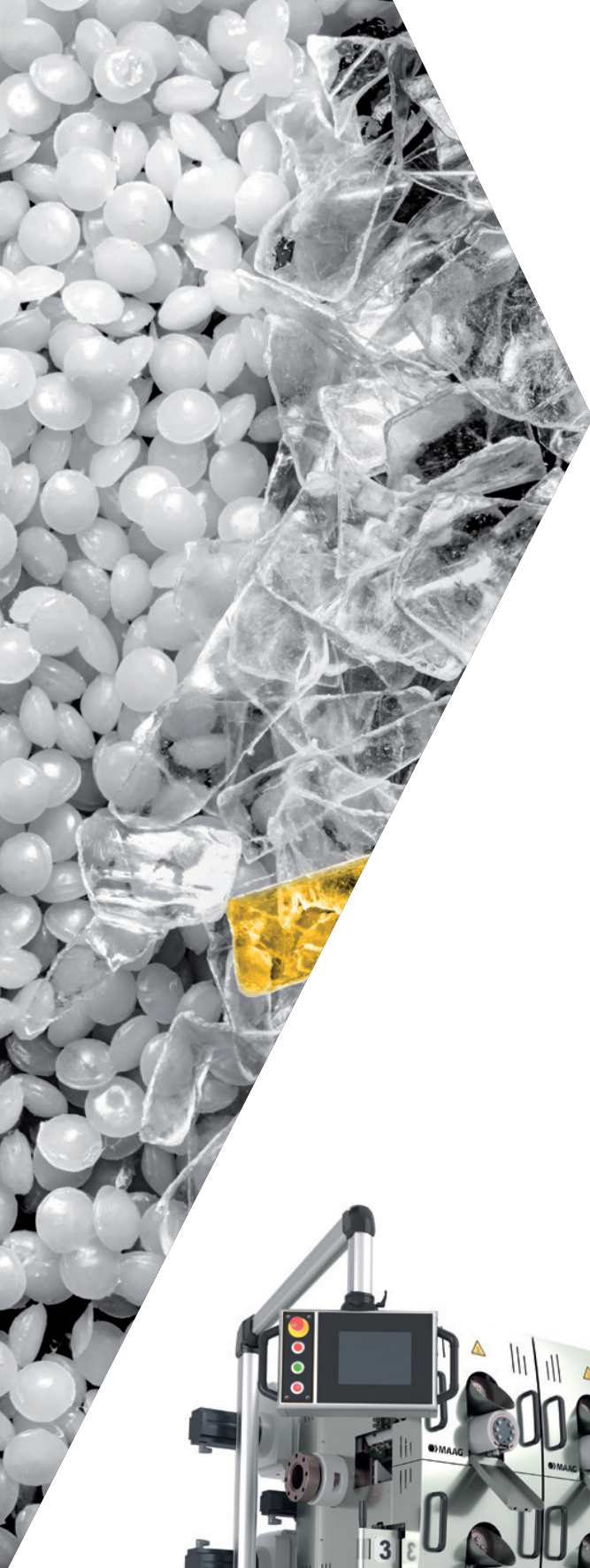
Car bumpers  
차량범퍼

Electronic waste  
폐전자제품

Refrigerator recycling  
냉장고 재활용

Yogurt pots  
요거트병





## ECO series PET용

The continuous melt filters in the ECO series are equally suited for filtering polymer feedstock from industrial waste with a low level of contamination or lightly contaminated post-consumer waste, and they can also be used for clean virgin material.

Our ECO melt filters are capable of processing a wide range of polymers but due to their special design are mainly employed in PET and PA applications. All solid or elastomer foreign particles such as gels, black specs, paper, wood, aluminum, copper, rubber, silicone or high-melting polymer composites are efficiently removed. In particular, there is significantly less degraded PET in the form of black specks.

For this reason, the classic application for ECO melt filters is extrusion systems, for instance where recycled PET bottle flake is converted into food packaging films, packaging tape, and fibers. PET repelletizing and compounding processes in general are other potential areas of use.

ECO melt filters can in principle be used in any extrusion line – either single or twin-screw and irrespective of the type of pelletizing system or other downstream unit.

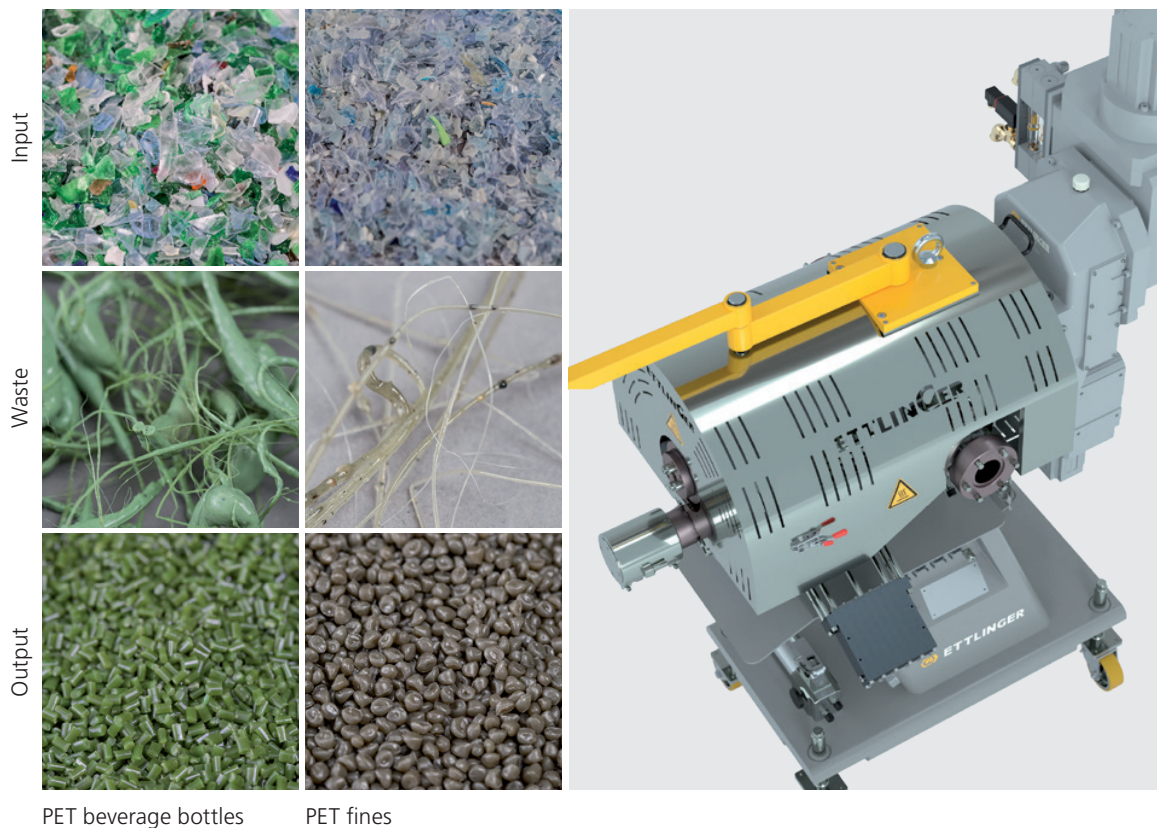
Four different sizes – ECO 200, ECO 350, ECO 500 and ECO 1000 – achieve throughputs from 150 to 10,000 kg/hour depending on the application.



당사의 ECO 용융 필터는 광범위한 폴리머를 처리 할 수 있지만 특수 설계로 인하여 주로 PET 및 PA 응용 분야에 사용됩니다.

예를 들어, 재활용된 PET병 분쇄품은 식품용필름, 포장테이프와 섬유로 바뀔 수 있습니다.

ECO 200~ECO 1000은 적용수준에 따라서 시간당 토출용량 150~10,000kg까지 가능합니다.



	ECO 200	ECO 350	ECO 500	ECO 1000
<b>Total filtration surface [cm<sup>2</sup>]</b>	1.250	1.570	3.140	6.280
<b>Throughput max. [kg/h]</b>	1.200	2.500	4.000	10.000
<b>Heating zones</b>	6 + 1	6 + 1	15 + 2	20 + 3
<b>Operating pressure max. [bar]</b>	300	300	300	300
<b>Length x width x height [cm]</b>	71 x 114 x 168	64 x 135 x 169	89 x 148 x 172	168 x 179 x 223
<b>Weight [kg]</b>	700	1.000	3.300	5.500
<b>Total installed capacity [kW]</b>	27	28	68	108

We are where our customers are



**다이나믹인스트러먼트(주)**

경기도 군포시 고산로148번길 17 군포IT밸리 A동 1905호

T) 031-473-0040

F) 031-473-2140

e-mail : [ettlinger.kr@gmail.com](mailto:ettlinger.kr@gmail.com)

Home page : [www.dynisco.kr](http://www.dynisco.kr)